

MONTHLY MEMBERSHIP PROGRESS REPORT

LOCATION TENNESSEE

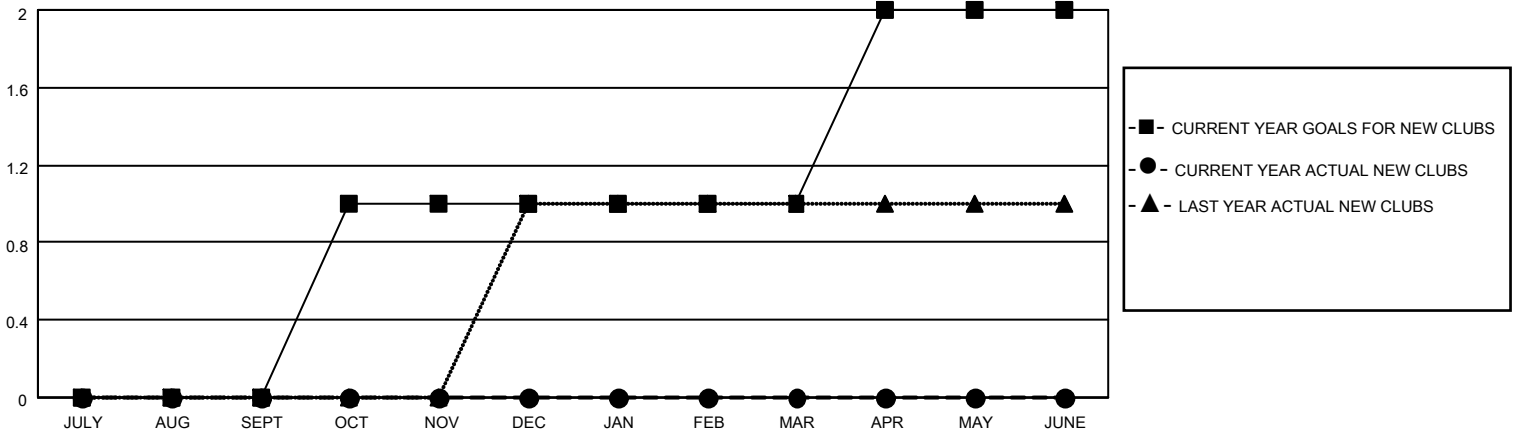
District 12 L

Results as of: 5/31/2023

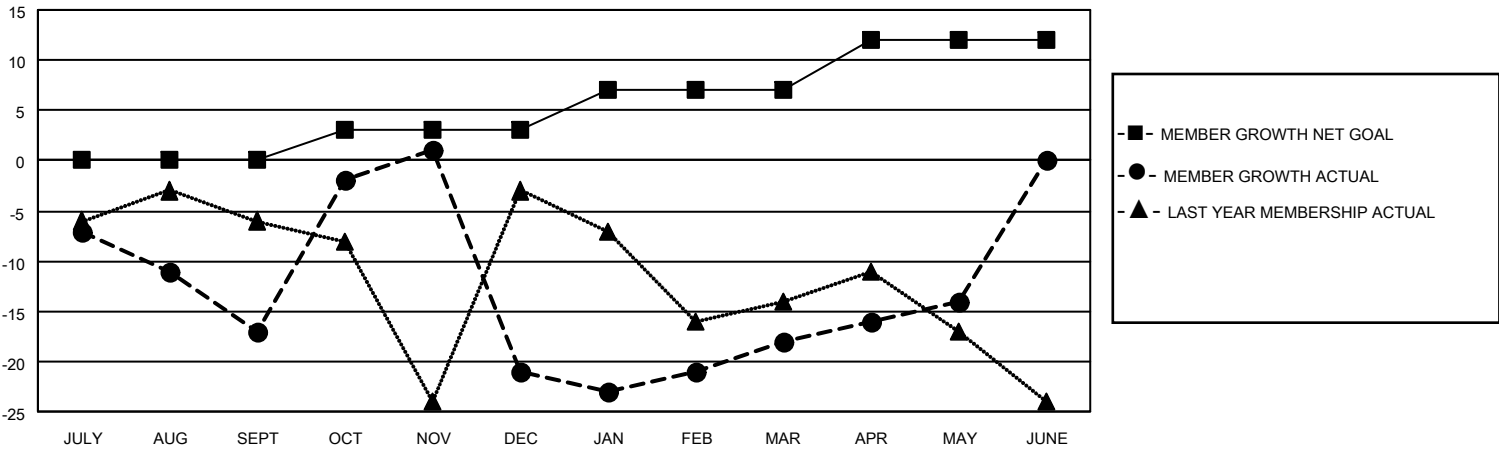
Clubs			
RESULTS FOR 2022-2023			
QUARTER	NEW CLUB GOAL	NEW CLUBS	DROPPED CLUBS
JULY/AUG/SEPT	0	0	0
OCT/NOV/DEC	1	0	2
JAN/FEB/MAR	0	0	0
APR/MAY/JUNE	1	0	0

Members			
RESULTS FOR 2022-2023			
QUARTER	MEMBER GROWTH NET GOAL	MEMBER GROWTH ACTUAL	DROPPED MEMBERS ACTUAL (including transfers)
JULY/AUG/SEPT	0	9	26
OCT/NOV/DEC	3	28	30
JAN/FEB/MAR	4	14	9
APR/MAY/JUNE	5	9	4

GOALS AND ACTUAL NEW CLUBS CUMULATIVE



GOALS AND ACTUAL MEMBERS CUMULATIVE



DROPPED CLUBS: 2	
<u>DROPPED MEMBERS</u>	
DECEASED	9
CLUB CANCELLED	9
OTHER	51
TOTAL	69

17 CLUBS OF 36 ADDED 1 OR MORE NEW MEMBERS

[CLICK HERE FOR CUMULATIVE MEMBERSHIP DATA](#)

<u>GENDER DISTRIBUTION</u>	
MALE	428 (64.26%)
FEMALE	238 (35.74%)
NON BINARY	0 (0.00%)
PREFER NOT TO ANSWER	0 (0.00%)
TOTAL FAMILY UNIT MEMBERS	
	83
FAMILY MEMBERS PAYING HALF DUES	
	42